

# INTERFLOOR BELT CONVEYOR

D10

The versatility and economy of SADLER interfloor belt conveyors has been well established throughout the years.

CUSTOMER: \_\_\_\_\_

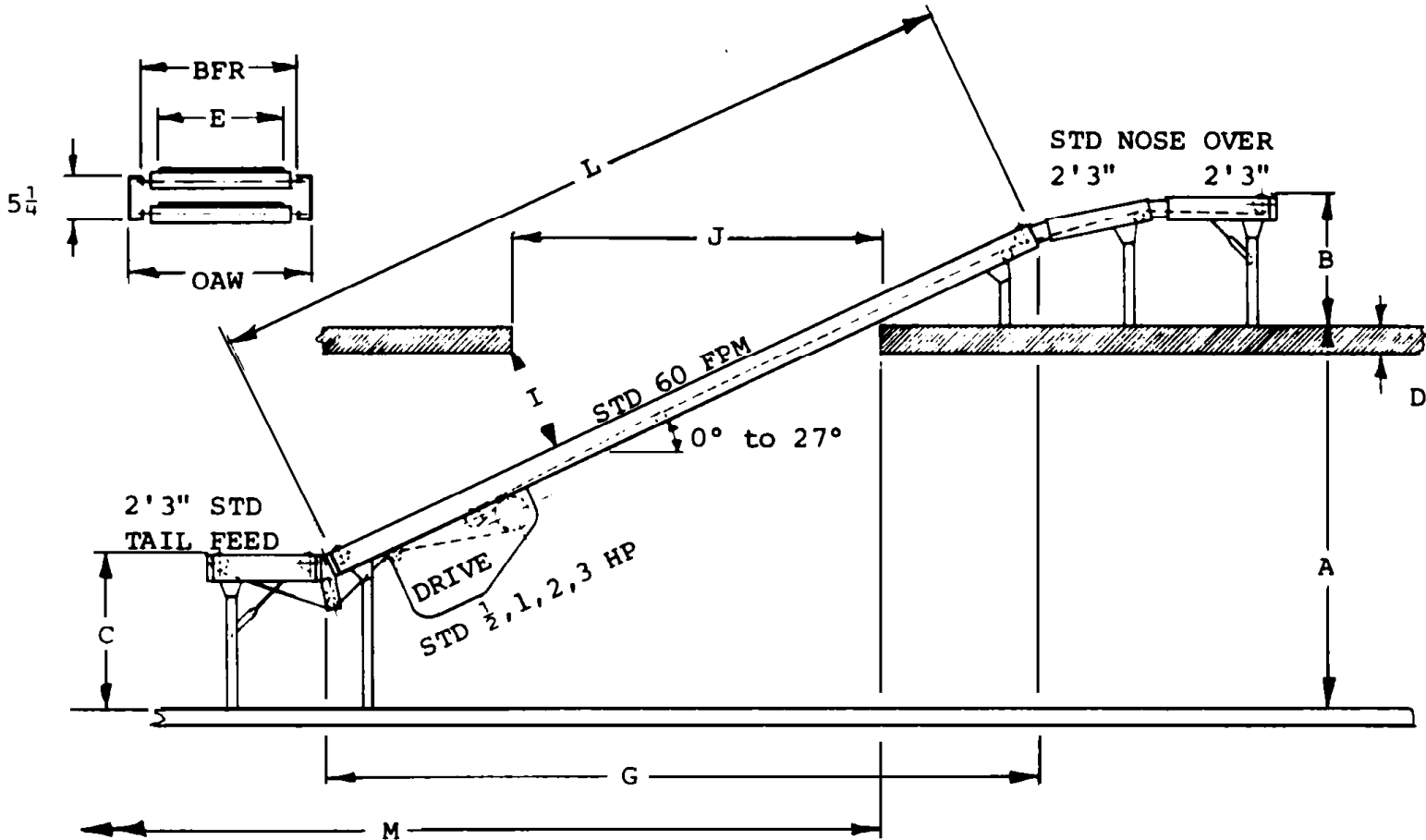
PACKAGE SIZES - MAX L. \_\_\_\_\_ W \_\_\_\_\_ H \_\_\_\_\_ WT \_\_\_\_\_ RATE MAX. \_\_\_\_\_ /MINUTE

MODEL NO \_\_\_\_\_ O.A.L. \_\_\_\_\_ BED TYPE \_\_\_\_\_ BED WIDTH \_\_\_\_\_

TAIL FEED \_\_\_\_\_ 'TRANSITION \_\_\_\_\_ 'NOSE OVER \_\_\_\_\_ '

GUARDS \_\_\_\_\_ 'LONG \_\_\_\_\_ SIDE, NO \_\_\_\_\_

MOTOR: HP \_\_\_\_\_ VOLTS \_\_\_\_\_ PH \_\_\_\_\_ CONTROLS: \_\_\_\_\_ REVERSING \_\_\_\_\_ TOP \_\_\_\_\_ BOTTOM \_\_\_\_\_



- |   |   |
|---|---|
| A _____ Floor to floor height - Max 15'<br>Measure exactly                    | G _____ Length along floor line<br>Excluding tail feed and nose over                |
| B _____ Discharge height - Std 30"<br>As per your requirement                 | I _____ Package clearance<br>Suggest max package height + 6"                        |
| C _____ Loading height - Std 30"<br>As per your requirement                   | J _____ Floor opening length<br>Depends upon incline & pkg height                   |
| D _____ Floor thickness<br>Measure carefully                                  | L _____ Incline length - Std 10,15,20,25,30'<br>Excluding tail feed and nose over   |
| E _____ Belt width - Std 12,18,24,30,36"<br>BFR= BW+3" and BFR+ 3"=O.A. width | M _____ Available unobstructed distance<br>Limited space may make incline too steep |